

## **Winster Village Mag February 2014**

*Distributed free to homes in Winster  
40p for non-residents*

### CARNIAL QUEEN AND ATTENDANTS 2014

IF YOU WOULD LIKE TO PUT YOUR CHIDS NAME FORWARD  
FOR ANY OF THE FOLLOWING  
PLEASE CONTACT

IRENE WEBSTER TEL; 650248  
EMAIL; [issi.webster@hotmail.co.uk](mailto:issi.webster@hotmail.co.uk)



QUEEN - YEAR 7 AND UPWARDS  
PRINCESS - YEAR 3 - YEAR 6  
ROSEBUD - RECEPTION - YEAR 2  
PAGEBOY - RECEPTION - YEAR 2

YOU MUST BE AVAILABLE ON SUNDAY 29TH JUNE and  
SATURDAY 5TH JULY (carnival queen will be asked to be present at  
some events during the week and though out the year)  
AND THE FOLLOWING YEAR FOR HANDING OVER THE  
YEAR AFTER ON THE SUNDAY  
ENTERIES MUST BE IN BY **FEBRUARY 24th 2014**

### **Matlock Library—Temporary Closure**

Matlock Library is closed for refurbishment until 10th March. If you have a book on loan you can take it back to any library or renew on line. You may find that your due date is not until mid March as the Library gave extended loan periods for those taking out books from Matlock.

The mobile library is on Main Street 2.00 to 2.30 and on Leacroft 2.35 to 2.50pm on Tuesdays 4 and 18 February.

## WINSTER DIARY

### **Key to Venues:**

*BI=Burton Institute, JR=Jubilee Room, CH=Church, SH=School, MH=Market House, MS=Miners Standard, BG=Bowling Green, PO=Post Office PF=Playing Fields WS=Winster Surgery*

*SD =South Darley Village Hall, WMC=Winster Methodist Chapel*

*WR=Wensley Reading Room EVH=Elton Village Hall.*

*WEG= Winster Entertainments Group. SHDD St Helen's Darley Dale*

Fri	31	Jan	*	Winster Quiz 7.30pm	BI
Sun	2	Feb	*	Twinning Visit Meeting 6pm	BI
Tues	4	Feb	*	Mobile Library	
Wed	5	Feb	*	Carnival Cttee Meeting 8.00pm	BG
Thurs	8	Feb	*	Toddler Group 10.00 to 11.30	SH
Tues	18	Feb		MAG COPY DATE	
Mon	24	Feb	*	History Group 7.30pm	BI
Thurs	27	Feb	*	Elton Gardening Club 7.30pm	EVH
Fri	28	Feb	*	Winster Quiz 7.30pm	BI

*\* Further info elsewhere in the Magazine*

This diary (with extra details of events in future months) also appears on the Winster Website at [www.winster.org](http://www.winster.org)

Citizen Advice Bureau visits Winster Surgery  
2nd Thursday of every month

To add an event to the diary, email the details to [diary@winster.org](mailto:diary@winster.org) or hand in a note to the Post Office.

## Winster Primary School PTFA Monthly Baby & Toddler Group at Winster School

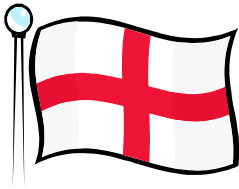
Janice and Tracey are continuing to run the Baby and Toddler Group for a while longer. It runs on the first Thursday of each month during term time so for this term the dates are:

Thursday 6<sup>th</sup> February  
Thursday 6<sup>th</sup> March 10.00 to 11.30am

and best of all... ....It's FREE

Children aged 0 to school age welcome  
So come and join us, grandparents, Carers and dads all welcome  
phone Janice 650078 for more details

## TWINNING VISIT TO MONTERUBBIANO



**5-9 JUNE 2014**



If you are interested in being part of a village group to visit Monterubbiano's Festival please come to a meeting in the Burton Institute on

**Sunday 2 February at 6pm.**

We need to book flights while airfares are still cheap.

All questions and queries will be answered and an outline of the visit will be presented.

Thank you.

Twinning Committee



**NEXT QUIZ  
FRIDAY 31 JANUARY  
7.30  
BURTON INSTITUTE  
asking the questions  
Don & Arthur**

**Proceeds to Winster Village  
School**

**FRIDAY 28 FEBRUARY 2014  
7.30PM**

**THE BURTON INSTITUTE  
Setting and asking the questions  
JANE & STEVE BRADBURY**

**\*\*\*\*\***

**ADMISSION £2.00. RAFFLE £1**

**Everyone is welcome**

**No need to be part of a team**

**Bring some drink**

**A few nibbles**

**And have a good time**

**Proceeds to the Village Shop  
NEW PEOPLE NEEDED**

December quiz made £124 for the LUNCHEON CLUB

## Early notice of shows in Winster (dates for your diaries)

Fri March 28                      Richard Durrant                      Sponsored by Live and Local. Tickets £8 (£6) available later from Winster Post Office or 01629 650090

"Richard Durrant has never felt comfortable being referred to as a *classical guitarist*, preferring the term *concert guitarist*. Considering the difference between these two job descriptions is a good way of beginning to understand his art. His guitar playing is richly romantic, has true virtuosity and crosses all musical boundaries. He performs standing up and his concerts are usually amplified and include projected images."

Fri May 16                      John Conolly                      Tickets £7 (£5) available later from Winster Post Office or 01629 650090

John is well known in folk music circles for his beautifully crafted songs, as well as his entertaining performances, including the wit and wisdom with which he talks to the audience. He is well known for songs such as "Fiddlers' Green", "Punch and Judy Man", 'Out of Season', and monologues like "Albert goes to Cleethorpes". In July 2007 John started us going with his hilarious show "Send us a Postcard", one of the first put on by Winster Entertainments Group. After one of his songs was sung in The Bowling Green at Christmas, a lot of people has been asking me when he's coming.

Any information wrong? Let me Anthea know on [mag@winster.org](mailto:mag@winster.org).  
Tel 650480 or leave a note at the Post Office.  
Complaints are passed onto the Village Mag Committee for action.

Last year the village mag logo on the front page was often places where the magazine was being typed.. This year it will be mainly helpful tips so please send some in preferably with a graphic. Did you know that many cars have a fuel gauge that has an arrow on nit to show which side the petrol cap is?

## **Winster Local History Group Talks this Spring and Summer**

### **Monday 24 February at 7.30 in the Burton Institute Workshop on a Winster Conservation Heritage Project**

Posters, jigsaws and cards of the Doors of Winster are part of an initiative by Jim and Tracey Dixon from which many of us have benefited (including the Village Shop). Their plan from the start was to raise money for village conservation projects, and they have now made an impressive £720 (and take this opportunity to thank those who have bought and sold). They are happy for the money to be spent directly on village heritage conservation projects. Alternatively, along with other contributions it could be put into a bid to the Heritage Lottery Fund, which could bring the total up to £10,000. If there were a bid, the History Group would be keen to be involved.

Jim and Tracey say ‘We have some ideas of where we would like to spend the money, such as repairing the tap sites by the Burton Institute and Church, and we also want other people’s ideas.’ That’s why the History Group has organised this workshop, which will also feature a short presentation. As always, everyone is welcome, including non-members. Come along and share your thoughts.

Monday 24 March. Bonsall Barns Project (to be confirmed)

Monday 28 April. Christine Gregory, ‘A River in Time’ (on the River Bradford)

Monday 23 June at 7.00. Adrian Farmer, Guided Walk round Belper, part 2.

Don’t forget you can see the magazine on line at

[www.winster.org](http://www.winster.org)

Save paper and let us know if you would prefer not to have the magazine delivered. thanks



**Every Tuesday  
6.30pm to 8.00pm  
Men and women of all ages  
£30 for 6 classes OR £6 each class  
For information June Hine 650994  
Teacher - Helen has 40 years  
experience and the classes are here in our  
village**

### **A big thank you!**

I would like to say a huge thank you to everyone who got involved or came to our charity coffee morning in December. We had a great time and raised a grand total of £240 from the morning itself and all connected donations! It was lovely to see so many faces from the village that I've known since I was young. All the proceeds went to the charity Restless Development.

I am now in India volunteering for the charity. After a week of training in an elder's village a team of 4 of us have moved into a house in the Kanjipuram district of Tamil Nadu. We have spent the first few days dealing with an ant, rat and monkey infestation but now are ready to start work properly! We will be working in 4 rural communities with young people aged 16 to 25. I am on the health team so will be using non formal education techniques to teach about the importance of washing hands and avoiding vector borne diseases. In the areas we are working there are no bins that are emptied by the government so waste management is a huge issue. India is such an interesting country as there are huge amounts of wealth and a huge amount of poverty. Thanks so much to everyone again, I hope you all had a lovely Christmas and I will see you all on my return to Winster at the end of March.

Pepa Higgins

## Winster Community Orchard Update

The Group is now ordering 10 fruit trees to be planted. We will be in touch with our donors to provide them with a list of trees for their sponsorship and hope to plant late March/early April.

We need someone to mow (and rake) the lower area of Woodhouse Lane where the community orchard is to be planted. Anyone free to give a regular commitment to do this?  
More info from Dave Robinson 650395

And finally we hope to do another Plant Sale—probably 2nd week In May so please save any cuttings or seedlings you have. We had shrubs, flowers and vegetables last year—all a great success. I grew Brussels for the first time and still cropping! Thanks Anthea

## Defibrillator Update

The Defib Group have approached the Peak Park and the Village Shop Board about installing the defibrillator inside a special box on the outside of the shop near the village noticeboard. The Group is still pursuing the option of using the bus shelter but it is likely that the costs of installing a new electricity supply would be in excess of £1,000. A formal application will be made to the British Heart Foundation for a grant towards the purchase of the defibrillator (but not the box) and associated training. More info from Clive Newton 650480

## Area Community Forums

Look out for the next round of Area Community Forums where residents of the Dales can learn more about how the District Council works, seek views as well as listen to what people have to say on issues of local concern.

Southern - Monday 3rd February

Central - Monday 10th February

Northern - Monday 17th February

Venues to be confirmed. For more information please contact Ros Hession on 01629 761302 or email

[ros.hession@derbyshiredales.gov.uk](mailto:ros.hession@derbyshiredales.gov.uk)





## Audley Care

Our discreet and friendly staff will help you with as little or as much as you want, including:

- A hand with domestic tasks
- Help with personal care or eating
- Someone to walk the dog or feed the cat
- A little help and company if you are recovering from illness
- Long term, short term or emergency care

**Call us on 01629 736750**  
[www.audleycare.co.uk](http://www.audleycare.co.uk)



# SELECTA TYRE LTD.

- TYRES ● EXHAUSTS ● BATTERIES ● BRAKES
  - MOT & SERVICING (*Ashbourne Only*) & more....
- PRICE PROMISE – We won't be beaten on price!**

<b>MATLOCK</b> 4 NEW STREET	<b>FREEPHONE</b> 0800 977 8174	<b>LOCAL</b> 01629 56606
--------------------------------	-----------------------------------	-----------------------------

<b>BUXTON</b> FAIRFIELD RD	<b>FREEPHONE</b> 0800 977 8182	<b>LOCAL</b> 01298 212367
-------------------------------	-----------------------------------	------------------------------

<b>ASHBOURNE *</b> WATERSIDE ROAD	<b>FREEPHONE</b> 0800 977 8188	<b>LOCAL</b> 01335 342135
--------------------------------------	-----------------------------------	------------------------------

<b>BELPER</b> 4 CAMPBELL ST	<b>FREEPHONE</b> 0800 977 8170	<b>LOCAL</b> 01773 880635
--------------------------------	-----------------------------------	------------------------------

[www.selectatyre.co.uk](http://www.selectatyre.co.uk)



### Opening Times

Mon – Fri ...8am – 6pm  
Sat .....8am – 5pm

\*Sun .....10am – 5pm  
(Ashbourne ONLY)

## JOHN DERRICK ACCOUNTING

Year end accounts ■ Tax returns ■ Vat returns ■ Bookkeeping  
*free initial consultation with home visits evening or weekend to suit you*  
*All fees agreed in advance with no hidden costs or vat*

Darren Pickles MAAT

T: 07876 192997

E: [enquiries@johnderrick.co.uk](mailto:enquiries@johnderrick.co.uk)

[www.johnderrick.co.uk](http://www.johnderrick.co.uk)



## Thomas Greateorex & Sons Ltd

Independent Family Funeral Directors since 1892

[www.greatorexfunerals.co.uk](http://www.greatorexfunerals.co.uk)

29 Knowleston Place, Matlock, DE4 3BU.

Telephone: 01629 582470

e-mail: [admin@greatorexfunerals.co.uk](mailto:admin@greatorexfunerals.co.uk)



Wednesday - Week 2

# Your collection day is a **Wednesday**



Please put all your  
containers out by  
7am on your  
collection day



Food caddy  
Grey bin or black sack

WEDNESDAY 11 December 2013

TUESDAY 24 December

WEDNESDAY 8 January 2014

WEDNESDAY 22 January

WEDNESDAY 5 February

WEDNESDAY 19 February

WEDNESDAY 5 March

WEDNESDAY 19 March

WEDNESDAY 2 April

WEDNESDAY 16 April

WEDNESDAY 30 April

WEDNESDAY 14 May

THURSDAY 29 May

WEDNESDAY 11 June

WEDNESDAY 25 June

WEDNESDAY 9 July

WEDNESDAY 23 July

WEDNESDAY 6 August

WEDNESDAY 20 August

WEDNESDAY 3 September

WEDNESDAY 17 September

WEDNESDAY 1 October

WEDNESDAY 15 October

WEDNESDAY 29 October

WEDNESDAY 12 November

WEDNESDAY 26 November

Food caddy  
Green-lid bin or garden waste sack  
Blue-lid bin or blue box & bags

WEDNESDAY 18 December 2013

THURSDAY 2 January 2014

WEDNESDAY 15 January

WEDNESDAY 29 January

WEDNESDAY 12 February

WEDNESDAY 26 February

WEDNESDAY 12 March

WEDNESDAY 26 March

WEDNESDAY 9 April

THURSDAY 24 April

THURSDAY 8 May

WEDNESDAY 21 May

WEDNESDAY 4 June

WEDNESDAY 18 June

WEDNESDAY 2 July

WEDNESDAY 16 July

WEDNESDAY 30 July

WEDNESDAY 13 August

THURSDAY 28 August

WEDNESDAY 10 September

WEDNESDAY 24 September

WEDNESDAY 8 October

WEDNESDAY 22 October

WEDNESDAY 5 November

WEDNESDAY 19 November

WEDNESDAY 3 December

 Bank holiday collection arrangements

'Bin Bot' designed by pupil from  
St Oswald's C.E. Infant School, Ashbourne



## OvenBlaster UK

We professionally clean ovens to remove grease and burnt on carbon using no odour biodegradable cleaning products

- Ovens
- Cookers
- Hobs
- Aga
- Range ovens
- Extractors
- Oven spares & repairs



For a Free phone quote call  
**01773 872688**  
[www.ovenblaster.co.uk](http://www.ovenblaster.co.uk)

jonathan davis

Individual handmade pieces  
to suit your needs.  
Problem solving and advice.

## furniture & cabinet maker

The Old Chapel, West Bank  
Winster, Derbyshire DE4 2DQ

**07970 047 118**

Email: [jon@jondavisfurniture.co.uk](mailto:jon@jondavisfurniture.co.uk)  
[www.jondavisfurniture.co.uk](http://www.jondavisfurniture.co.uk)

## Matthew Gill Properties Ltd

Property Renovation and  
maintenance to full  
project  
management



For all your property needs from  
new kitchens & bathrooms,  
landscaping and decking to full  
management of your house  
renovation project.

For more information  
contact Matt Gill on

01629 650574

**Not** everyone  
knows we do  
home and car  
insurance.

**We do.**

Call 01629 582025 for a quote or  
pop into the office to talk to us  
at NFU Mutual office,  
The old carpenter's shop,  
Lumsdale Road,  
Matlock  
DE4 5EW



We do right by you

Agent of The National Farmers Union Mutual Insurance Society Limited

## **PTFA 100 Club is due for Renewal**

The PTFA 100 club raises funds for Winster village school. The funds contribute towards non-core curriculum items such as transport to sporting events, school trips, bunting to decorate school during wakes week and classroom equipment such as visualisers (modern day Overhead Projectors!!) and phonics equipment to help children learn to read. The club is a monthly draw costing £10 for 6 months or £20 annually; there are 4 prizes each month: £25, £15 and 2 x £5 and the winners are drawn at school by the children and printed in the magazine each month. The draw is administered by Janice Ashin.

Thank you to everyone who has subscribed over the last year your contribution has been very important as the school goes from strength to strength; if you wish to subscribe this year please place your subscription in a named envelope through Janice's door – no. 11 Leacroft (next but one to the garage) to be included in the draw.

The deadline for Renewals is 21<sup>st</sup> February. Please ring Sharon 650718 for more information.

### **DON SHIMWELL**

ACIPHE RP  
GENERAL BUILDER &  
PLUMBER

Over 40 years experience  
Working on properties in  
Winster  
And surrounding areas.

No VAT on labour charges.

For more information ring  
Don on 01246 206646  
Mob: 07879498026 or  
Email  
[dshimwell@aol.com](mailto:dshimwell@aol.com)

We need AREA VOLUNTEER COORDINATORS to work with Zoe, our Community Fundraiser, to help organise events, recruit volunteers, organise collection boxes in your area and generally be an ambassador for Helen's Trust.

Get in touch with Zoe if you'd like to chat about what the role involves on 01629 812759 or have a look at the Helen's Trust website.

Dear David & Marilyn.

Our grateful thanks from all the Darby & Joan club members to say how much we appreciated our Christmas lunch. The food was plentiful and delicious, and the atmosphere was first class. The music was enjoyable too, there's nothing as cheery as a good old sing song.

Dear Shaun & Carol.

The Darby & Joan club members would like you to know how very pleased they are to receive your generous donation from the music quiz you organised which you held in the Bowling Green Inn (courtesy of David & Marilyn). It is very much appreciated.

Free to good home: Box of Epson Stylus cartridges series no. T0615

Heathcote Trust. Dear Mr. Long.

Your kind donation of £200 from the Heathcote Trust will be a very useful asset to our future finances.

Thank you from the Darby & Joan club members.



**Wednesday 5 February**  
**Carnival Committee Meeting**  
**8pm BOWLING GREEN**

Winster & Elton Luncheon Club

Members and helpers would like to thank David and Marilyn Bentley and helpers at The Bowling Green. They generously provided us with an excellent Christmas lunch which was thoroughly enjoyed by everybody. A very kind gentleman played the accordion and we enjoyed a very enthusiastic and energetic Christmas sing-a-long.

Thank you once again to everyone who made the day so special.

Find the words which will fit in the "front" of the following groups of three words.

*Answers  
see page 18*

off	sided	way	cup	fisher	prawn
glue	star	natural	less	worm	haired
bath	wrap	car	case	end	club
pour	hill	hearted	fish	leaf	plated
work	back	money	tax	side	house

Do take care. More next month. Joyce.

Winsters Walkers meet the first and third Monday in the month. Walks are not too long and usually include a lunch break at a pub. To join us contact Judy Hinsliff 650119 or [judy.hinsliff@gmail.com](mailto:judy.hinsliff@gmail.com).

Copy can be left at Winsters Post Office. Or e-mail [mag@winster.org](mailto:mag@winster.org). Preferable size of articles up to 250 words or 1/2 page A5. Many thanks

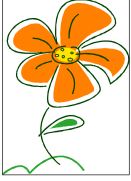
### What's on in Elton?

Feb 13	Elton WI	7.30pm	VH
14	Quiz Night	7.30pm	VH
18	History Group	7.30pm	VH
27	Gardening Club	7.30pm	VH

Every Wednesday Gentle Keep Fit 6.30pm Village Hall  
Contact Anne Wellington 650857

Post Office open every Thursday 1.45 to 3.45pm  
Elton School

## **Elton Gardening Club**



Our next talk is on 27 February with Anthea Bent talking about *Plants in North Cyprus*. we meet on the 4<sup>th</sup> Thursday of the month at 7.30 in Elton Village Hall We also arrange two trips to well known gardens in June and July.

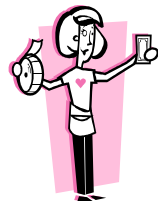
New members are always very welcome. If you are interested in gardens but not green-fingered don't worry. The talks are varied and very interesting. There is a charge of £2.50 which includes refreshments. A number of people from Winster attend and car sharing can be arranged.

For more information contact Clive on 650480 or [clive.r.newton@btinternet.com](mailto:clive.r.newton@btinternet.com)

Can you please put a thank you in the mag from myself Carol and Shaun and Sandra and Fred to the Luncheon Club for inviting us to their Christmas lunch we had a lovely time and thank David and Marilyn for their hospitality and can I thank the Derby and Joan for asking me carol to their Christmas lunch I had a lovely time.  
Thank you Carol Ashin

Winster village community choir.  
Anyone who likes to sing welcome.  
We meet alternate Sundays throughout the year  
Reading music nice, but not necessary.  
Next practice 5pm Sunday 26th Jan.  
contact Phyllis Mason 650241

Carolyn would like to thank everyone who gave prizes and supported the raffle. This raised an amazing £110 to be shared between Darby and Joan and the RNLI.





## Vicar's Letter

"it is not our occupations that tire us out, but our pre-occupations."  
Henri Nouwen.

This quotation jumped out to me the other day as I read it I thought how true it is. My Granny had a saying "Hard Work has killed no one, but worry kills horses." The point is clear in both quotes; we can worry and we can obsess about things both real problems and imaginary ones and we can become ill. There is more mental illness, stress and depression around now than ever before. There are more suicides in young people at this time than ever before. What's wrong with us? Well, the reality is 'probably quite a lot!!' We're not perfect, we are sinners and we are spiritually broken. This is our reality and much of the above issues come about when we try to run away from them. Christianity is about reality and truth. It's not airy fairy but it's a Faith of seeking out truth. So let us start this new year by being honest. Let us allow the false masks drop away for we may be really messed up and imperfect but God loves us. And as we work on ourselves; as we try to be honest and look at ourselves with truth in hope.

In the middle ages and even some today, above many monastery's doors there is the inscription "Pax Intranibus" which means peace to those who enter here. In this busy and sometimes mad world, may you find peace in the three lovely churches we share. Please remember you are always very welcome.

With all my prayers and best wishes.

Stephen

## Church Services

First Sunday of the month 9.00am Holy Communion

2<sup>nd</sup> Sunday 9.30am Holy Communion

3<sup>rd</sup> & 4th Sunday 9.00am Holy Communion

# Winster Directory

<b>Simon J Percival Joinery</b> <i>mob 07779105470</i> Winster's local Joiner & Handyman—no job too small	650115
<b>A.P.Brown: Electrical Contractor (Winster/Elton).</b> All Installations. NICEIC Approved	077900 19093
<b>Matlock Glass Co Ltd</b> Replacement windows & doors, double glazing. Safety glass	582043
<b>Bowling Green Inn</b> Good home cooking. East Bank, Winster	650219
<b>Frank Mason Portable Appliance Testing</b> Holiday lets, small businesses, churches & halls	650241
<b>Peak Cottage Plants</b> <i>www.PeakCottagePlants.co.uk</i> Hardy perennial plants, design & planting service	650428
<b>Peak Insurance Services Ltd—24 Bakewell Road, Matlock</b> Personal Service for all Business and Home Insurance authorised & regulated by the Financial Conduct Authority	582911
<b>DJG's Taxis Birchover</b> 650025 or Up to 8 passengers <a href="http://www.DJG-Taxis.co.uk">www.DJG-Taxis.co.uk</a>	0776723 8331
<b>JPB Services</b> <i>Maintenance, Decorating, Gardening</i> 4 East End, Elton.	650593 07966 526946
<b>Amy's Dairy</b> All fresh diary products delivered to your door	636639 07799 880740

Answers to puzzle page see page 15: one, king, super, wire, bubble,  
book, down, gold, paper, road.

# Winster Directory

<b><i>Miner's Standard</i></b> <b><i>Real Ale Home cooked Meals Top of the Bank, Winster</i></b>	650279
<b><i>Leacroft Garage and Car Sales</i></b> All mechanical and body repairs to any make, MOT	650253
<b><i>Darley Dale Private Hire (Colin)</i></b> 7 seater car—airports a speciality	<b>813779</b> 07752 680536
<b><i>R Stone Joinery</i></b> 3 Ivy Lane Elton. All types of Joinery Work undertaken	079718 15683
<b><i>David Barnsley</i></b> Painter & Decorator (Interior & Exterior)	650588
<b><i>Steve Salfield</i></b> <a href="mailto:steve@stevesalfield.com">steve@stevesalfield.com</a> Jazzsax—Jazz Blues, Rock'n'Roll bands for all	650183
<b><i>SCA Plumbing &amp; Heating</i></b> Gas Safe Registered. Holiday let certificates	07920 883088
<b><i>Old Shoulder of Mutton, West Bank</i></b> Newly refurbished ensuite B & B or room only	650005
<b><i>Glyn, Painter, Decorator &amp; Maintenance</i></b> Special Rates OAPs—Trusted Trader	760333 0777    3110393
<p>We list local businesses at £20 per year.</p> <p>send details to <a href="mailto:mag@winster.org">mag@winster.org</a>, or drop a note via the Post Office at the Shop. Alternatively you can call 01629 650086</p> <p>Also, individual adverts with graphics are £5 per month for a 1/5 page.</p> <p>Or contact 650086 if you wish to place a larger ad.</p>	

## WINSTER DIRECTORY

Village Mag	Anthea Rawlence mag@winster.org	650480
Burton Institute: Chair	Frank Mason frankthewitch@yahoo.co.uk	650241
Burton Institute: Booking Wheelchair Christmas Tree	Gill Geddes      gill@winster.org Also Secret Gardens	650364
Burton Institute: Photocopier/Computer	John Geddes      john@winster.org	650364
Playing Fields/Tennis Court	Gerry Harpham	650412
Toddler Group	Janice Ashin	650078
Darby & Joan	Sandra Purslow	650222
School: Clerk Mel Landless	info@winster.derbyshire.sch.uk	650238
Village Shop	sales@winstervillageshop.com	650683
Post Office:	Carolyn Ludlam postoffice@winster.org	650668
Winster Surgery	Leacroft	650207
Carnival: Chair	Mandy Marsden      carnival@winster.org	650181
Parish Council: Chair, Neighbourhood Watch	Brian Long      parishchair@winster.org	650780
Entertainments Group History Group	Geoff Lester	650090
Winster Morris Men	Chris Gillott	650404
Bakewell & Eyam Transport		641920
Member of Parliament	Patrick McLoughlin	02072 193511
County Councillor	Simon Spencer simon.spencer@derbyshire.gov.uk	
District Councillor	Colin Swindell colin.swindell@derbyshiredales.gov.uk	07816 986 956
Vicar	Rev. Stephen Monk rev.stephenmonk@btinternet.com	734257